



Lake County Recycling News

Fall 2021

Friendly Reminders

2021-2022 HHW Drop-Off Events

Household hazardous waste drop-off events are planned for the following dates between 9:00 am and 1:00 pm.

- October 9th **ONLY** – Hidden Valley Lake
- October 15/16 – Lakeport
- November 19/20 – Clearlake
- December 18th **ONLY** – Lakeport
- January 15th **ONLY** – Clearlake
- February 18/19 – Lakeport
- March 18/19 – Clearlake
- April 15/16 – Lakeport
- May 14th **ONLY** – Lucerne Harbor
- May 20/21 – Clearlake
- June 17/18 – Lakeport
- July 15/16 – Clearlake
- August 19/20 – Lakeport
- September 16/17 – Clearlake

Lakeport

Lake County Waste Solutions
Transfer Station & Recycling Center
230 Soda Bay Road

Clearlake

Quackenbush Mountain Resource
Recovery & Compost Facility
16520 Davis Street (next to Eastlake Landfill)

Hidden Valley Lake

Hidden Valley Lake Fire Station #63
19287 Hartmann Rd. (by Post Office Boxes)

Lucerne Harbor

Lucerne Harbor Park
6225 East Highway 20

Holiday Collection Schedule

Collection is delayed by one day for customers whose service day falls on or after the following holidays when they occur on a weekday:

- MEMORIAL DAY
- JULY 4TH
- LABOR DAY
- THANKSGIVING DAY
- CHRISTMAS DAY
- NEW YEAR'S DAY

The Lake County Transfer Station & Recycling Center will also be closed on these holidays. For a complete description of the holiday schedule, visit us at www.candswaste.com.

Christmas Tree Collection

Christmas trees can be placed in green waste carts for curbside collection. Make sure all decorations are removed and the tree fits inside the cart with the lid closed. Flocked trees are not accepted.

Free Christmas tree recycling is also available at the Lake County Transfer Station during the two weeks following Christmas. Please remove all lights and decorations.

Remember to Think Before You Throw!



Dead batteries discarded into curbside carts cause hundreds of fires every year. Many small electronics and household batteries cause major problems if improperly disposed of. With the use of lithium-ion batteries in household items, we increase the risk of fires each and every day.

Fires are not a new threat for the waste industry, but unlike other more common fire threats — including fertilizer, propane tanks, aerosol cans, and hot ashes — many batteries are small and often impossible to spot. One lithium-ion battery in a singing greeting card is enough to start a fire.

It is common for a battery fire to start on a concrete “tipping floor” where collection trucks dump their loads. When the trucks empty out their loads onto the open floor, discarded batteries can create a spark. That spark, once out in the open air, suddenly has the oxygen it needs to ignite a fire. In recent years, it has become more common for discarded batteries to find other metal objects inside a collection truck and ignite a fire when the load shifts around and air pockets find sparks. This is particularly dangerous as the drivers cannot easily spot the fire from inside the truck or the see smoke behind them.

Most people have the best intentions when they try to recycle electronics in their curbside carts. Still the fire risk remains, which is why batteries should never go in your curbside recycling. Instead, they should be properly, and safely, disposed of or recycled at your local Lake County Transfer Station & Recycling Facility or one of our monthly Hazardous Waste events.



PRO TIP

To prepare batteries for recycling: 1) Use a non-conductive tape, like electrical or duct tape, 2) Wrap over both ends (or terminals) to prevent any current from transferring, and 3) Once ends are wrapped, store batteries in a plastic or cardboard container that does not conduct electricity until you can bring them to a recycling facility.

DEBRIS BOXES

REMODELING | CONSTRUCTION | MAJOR CLEAN-UPS

707-234-6400

In 3 to 30 cubic yard sizes. Great for property clean outs, remodeling your home or business, yard & garden clean ups, and more.



For more information, or to schedule a delivery, give us a call.

RECYCLED LANDSCAPE MATERIALS

Quality products at reasonable prices

- COMPOST
- ARBOR MULCH
- GROUND BARK
- RED CHIPS
- MAHOGANY CHIPS
- NATURAL CHIPS

YOU PICK UP OR WE DELIVER

Lake County Transfer Station | 230 Soda Bay Road, Lakeport

707-234-6400

Call for Pricing or to Arrange Delivery

COMMERCIAL CORNER

If you are a commercial business or multifamily complex that produces 4 cubic yards or more of solid waste every week, you are required by the state to participate in a recycling program.

Follow us on Facebook: C&S WASTE SOLUTIONS



PUT CORDS AND HOSES IN GRAY CAN



KEEP IT CLEAN

LakeCountyRecycles.com

CASH FOR SCRAP METAL

Aluminum, Brass, Copper, Insulated Wire, Iron, Lead, Radiators, Stainless Steel & More...

ON SITE SCRAP METAL REMOVAL. BINS, BOXES AND TRAILERS AVAILABLE.

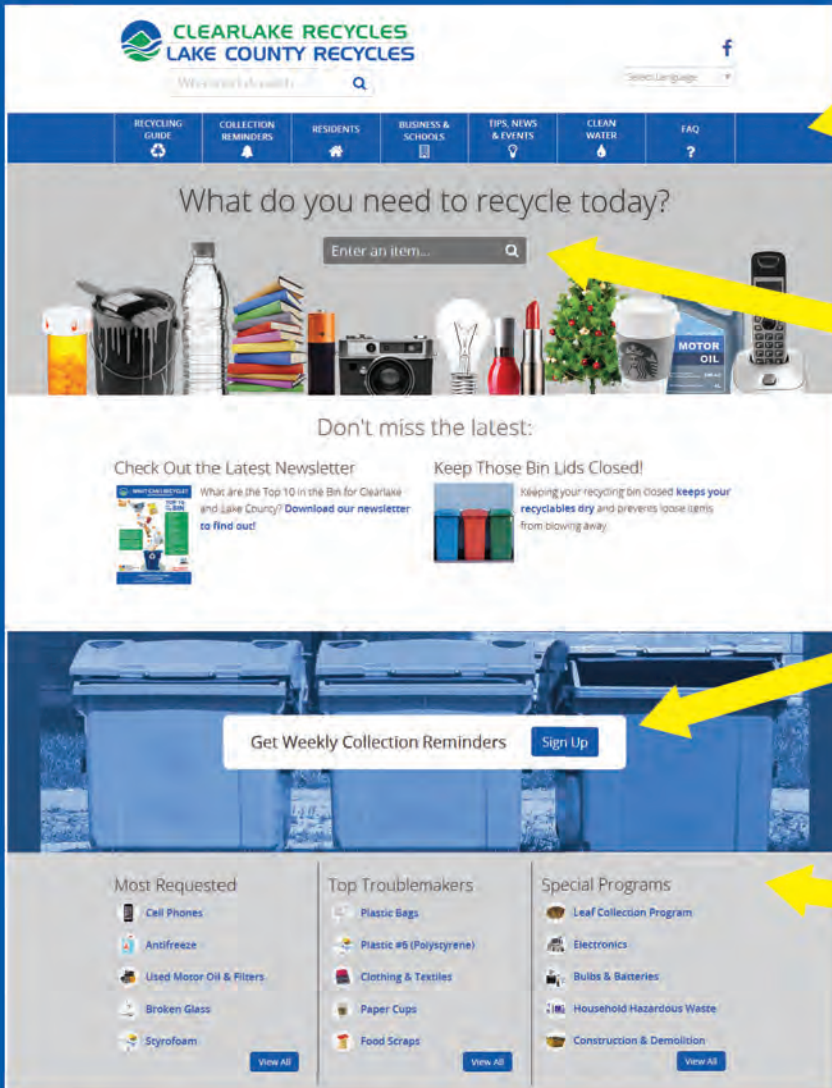
3515 Taylor Drive, Ukiah

707-234-6425

Call to Schedule Today

LakeCountyRecycles.com

CHECK IT OUT!



Check out our menu of services and tips.

Type in an item to find out if it goes in the blue, gray, or green bin.

Sign up to get weekly collection reminders.

Check out our Most Requested, our Top Troublemakers, and our Special Programs.

Search Results

Reminder Sign-Up

Troublemakers

